

10.6 New IMS developments

Parallel session 2

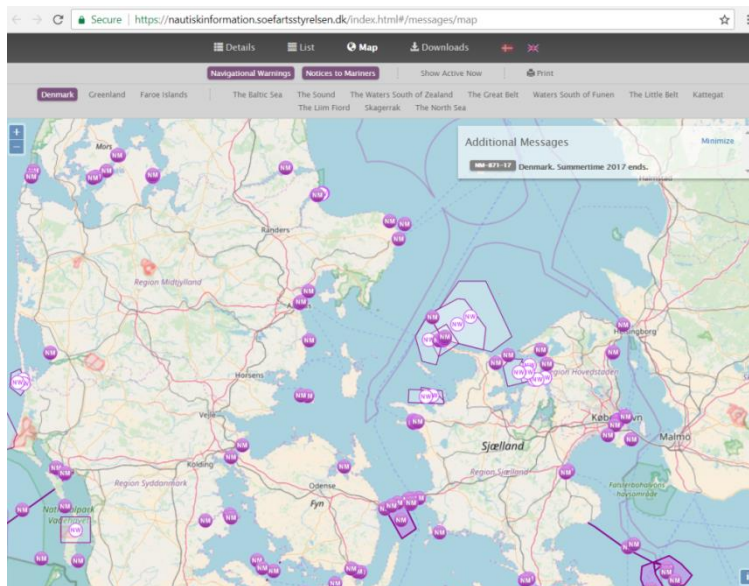
Lisbon, 19.10.2017

- **Display of SAR patterns;**
- **Navigational Warnings and Notices to Mariners display in SEG;**
- **GA Plans future plans;**
- **AOB's (EMCIP Public data, Areas display)**

- Actual SAR operations; or post-event analysis?
- Which SAR patterns to be used – vessel, object, person (Man Over Board – MOB)?
- Is the refresh update of the positions (min. 6 minutes) in EMSA systems sufficient ?
- added value of the SAR patterns in SEG?

Navigational Warnings and NtM display/ connection

- Is there a role of EMSA?
- Added value?
- Existing solutions?



<https://nautiskinformation.soefartsstyrelsen.dk/index.html#/messages/map>

- Disclaimer Note
- Restrictions applied – SEG users only – do we need to restrict it further?
- Is anybody else willing to join the project?
- Upload by EMSA upon consent from the owner?

<https://portal.esma.europa.eu>

"The data published on this site is intended for information purposes only. The General Arrangement (GA) plans can be used only in the context of Directive 2002/59/EC. The GA plans are neither a legal document nor do they constitute any type of certification. The provision of the GA plans is based on the pilot project and is not linked to any legal obligations of the flag-state, the ship-owner or any other third party. Although all efforts are made to ensure the correctness of the information published, EMSA and the providers of the GA plans do not guarantee that these are the latest copies of the GA plans and that the information is at any given moment up to date or error-free, accurate or coherent. They shall therefore not be held liable for any incompleteness or erroneous results presented based on the data in the GA plans or for the misuse of the GA plans or any damages caused by their use. The GA plans must neither be disclosed to any third party nor be reproduced without the consent of their respective owner."

- **EMCIP – Public data in SEG?**
- **Implementation as THETIS public data?**
 - Casualty report linked to the ship?
 - Anything else
 - Is there an analysis needed? Anyone with experience?
- **Added Value?**
- **Use cases?**

<https://emcipportal.jrc.ec.europa.eu/index.php?id=97>

Areas Displayed

- What do we display now? Where from?
- What is important?
- Is the accuracy critical?
- Best sources for the EEZ, 12Nm, SRR – EU and non-EU?
- Do MS need to have access to the central registry?
- Where the Areas could be used – e.g. ABMs?

<https://portal.esma.europa.eu>



 twitter.com/emsa_lisbon
 facebook.com/emsa.lisbon

 **EMSA**
European Maritime Safety Agency