



Live demonstration of IMDatE (Integrated Maritime Data Environment)

Leendert Bal, Samuel Djavidnia /
Department of Operations

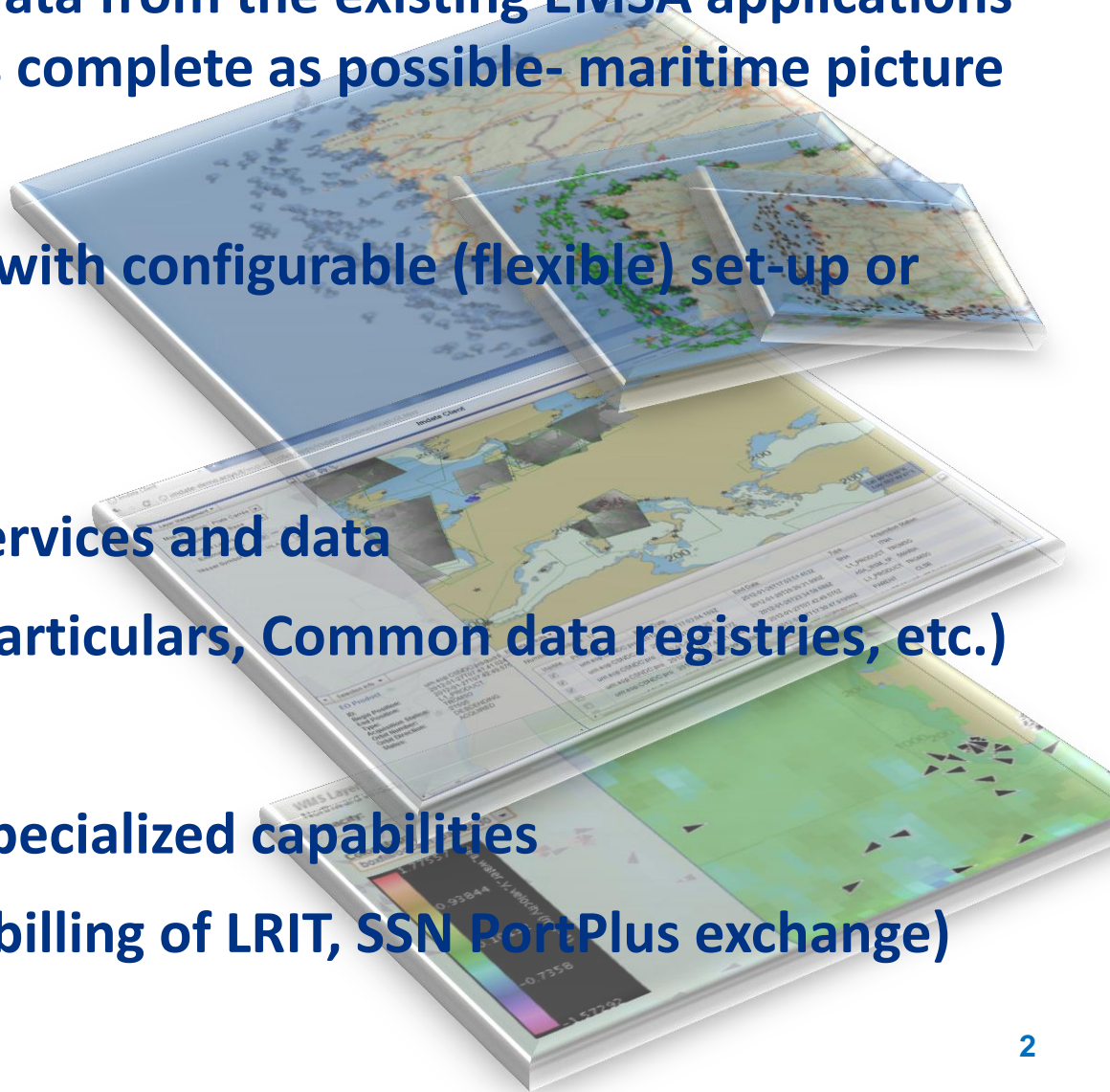
Lisbon, 7 May 2015
Maritime Surveillance Conference

1. Combine all maritime data from the existing EMSA applications and other sources for a –as complete as possible- maritime picture

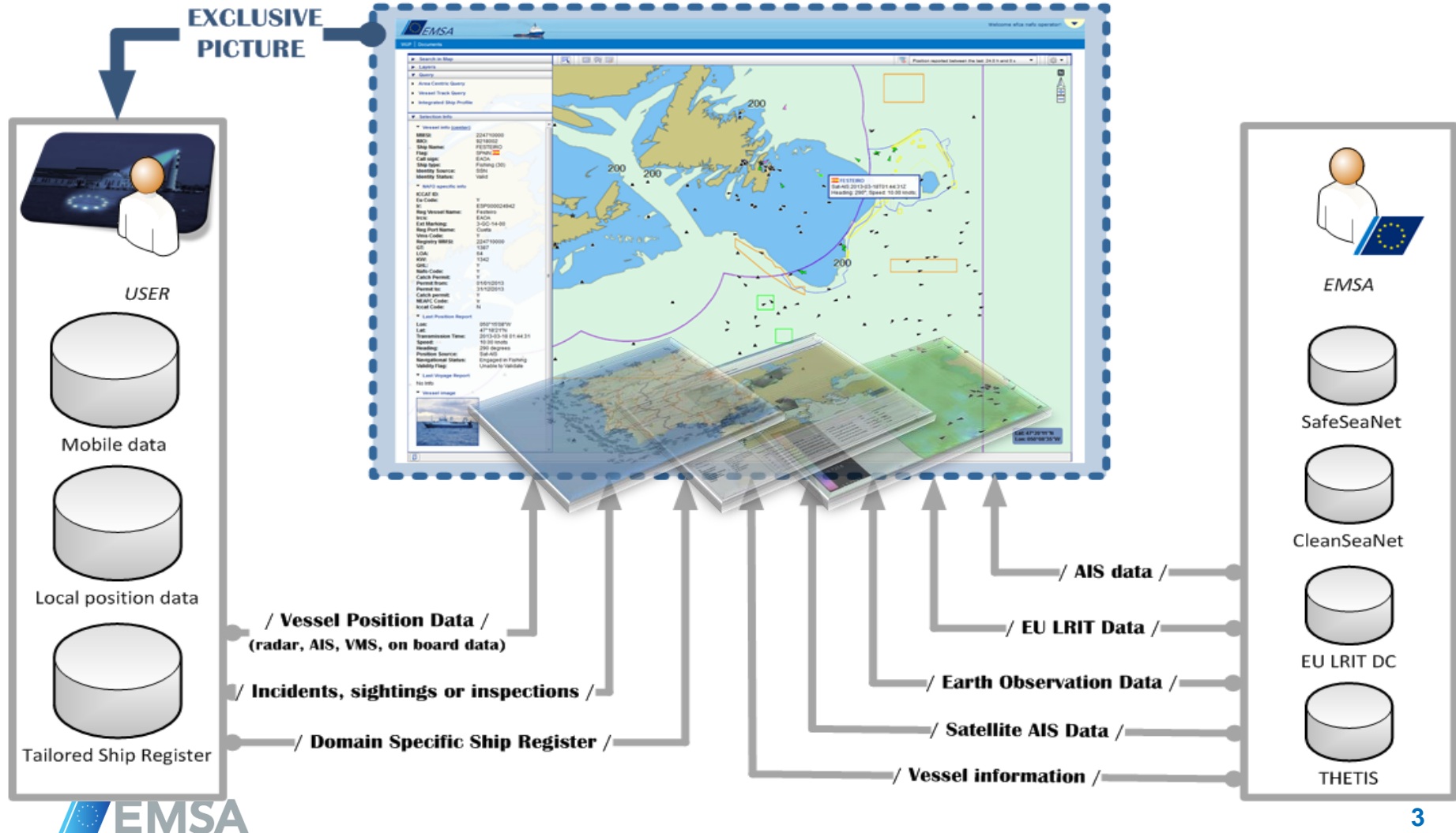
2. Provide a Single Screen with configurable (flexible) set-up or system-to-system link

**3. Harmonise horizontal services and data
(User Management, Ship particulars, Common data registries, etc.)**

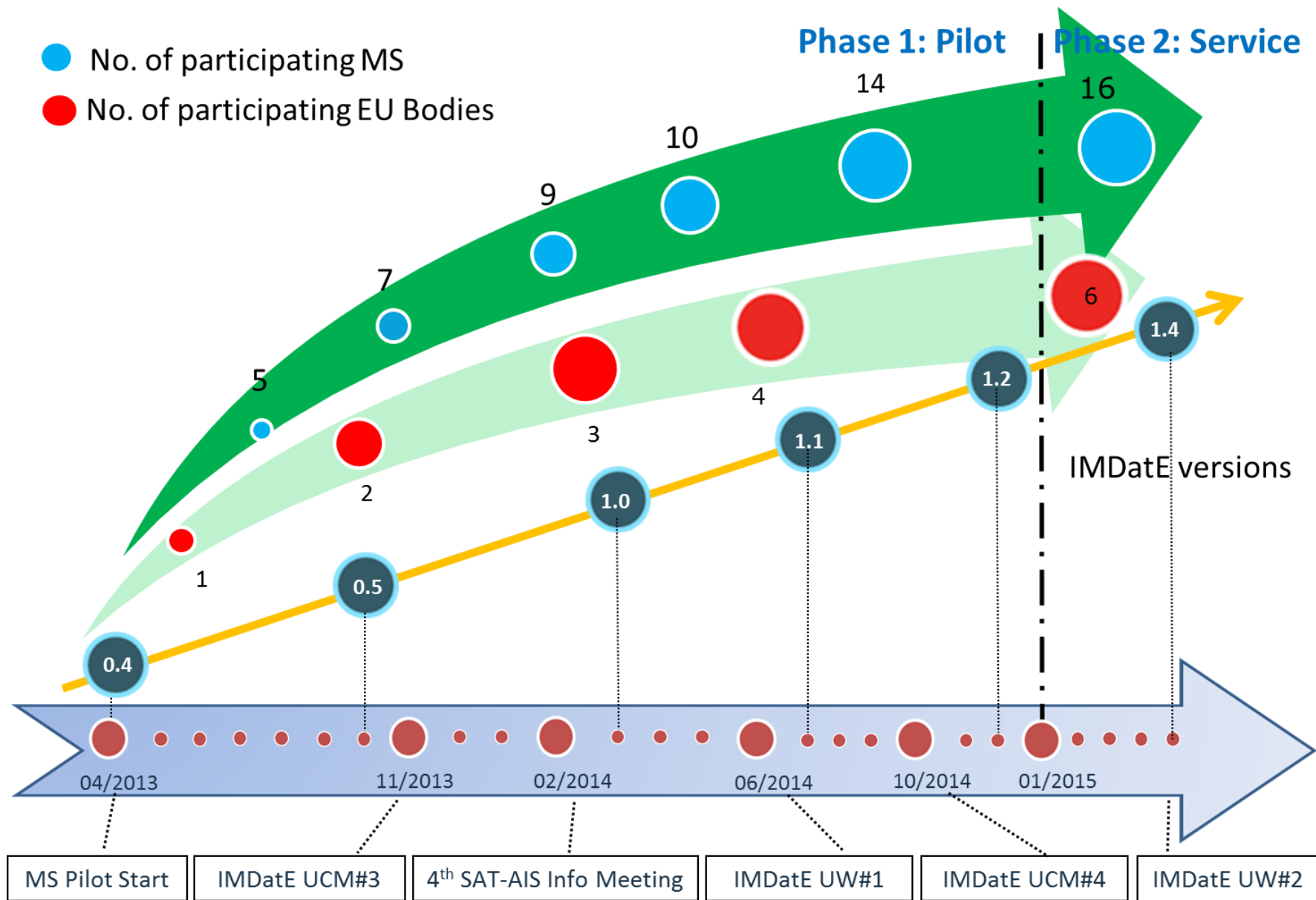
**4. Not replicate existing specialized capabilities
(ordering satellite images, billing of LRIT, SSN PortPlus exchange)**



Tailor-made Integrated Maritime Awareness Picture



Integrated Maritime Services



EU Member States



EU Agencies and bodies



Used for the following functions:

- Maritime Safety and Security (Search & Rescue, Fleet Monitoring, Vessel Traffic Monitoring)
- Environmental monitoring
- Border Control
- Defence
- Fisheries monitoring
- Law enforcement