

Wir machen Schifffahrt möglich.

# Claims Management in Germany

## CSCCL Indian Ocean



**Doina Schwarz**  
**Federal Waterways and Shipping Agency, Office Kiel**



# Indian Ocean – Presentation Overview

1. Incident/ Salvage Details
2. Costs/ Material
3. Claim Management – first step: Letter of Undertaking

## 1.1 Protagonist – CSCL Indian Ocean

length: about 400 m

beam: 58,6 m

draft max.: 16 m

capacity: about 19.000 TEU



## 1.2 Grounded vessel in river Ebe





## 1.2 Grounded vessel in river Elbe



## 1.3 Pumping down Bunker



## 1.4 Dredger removing ground



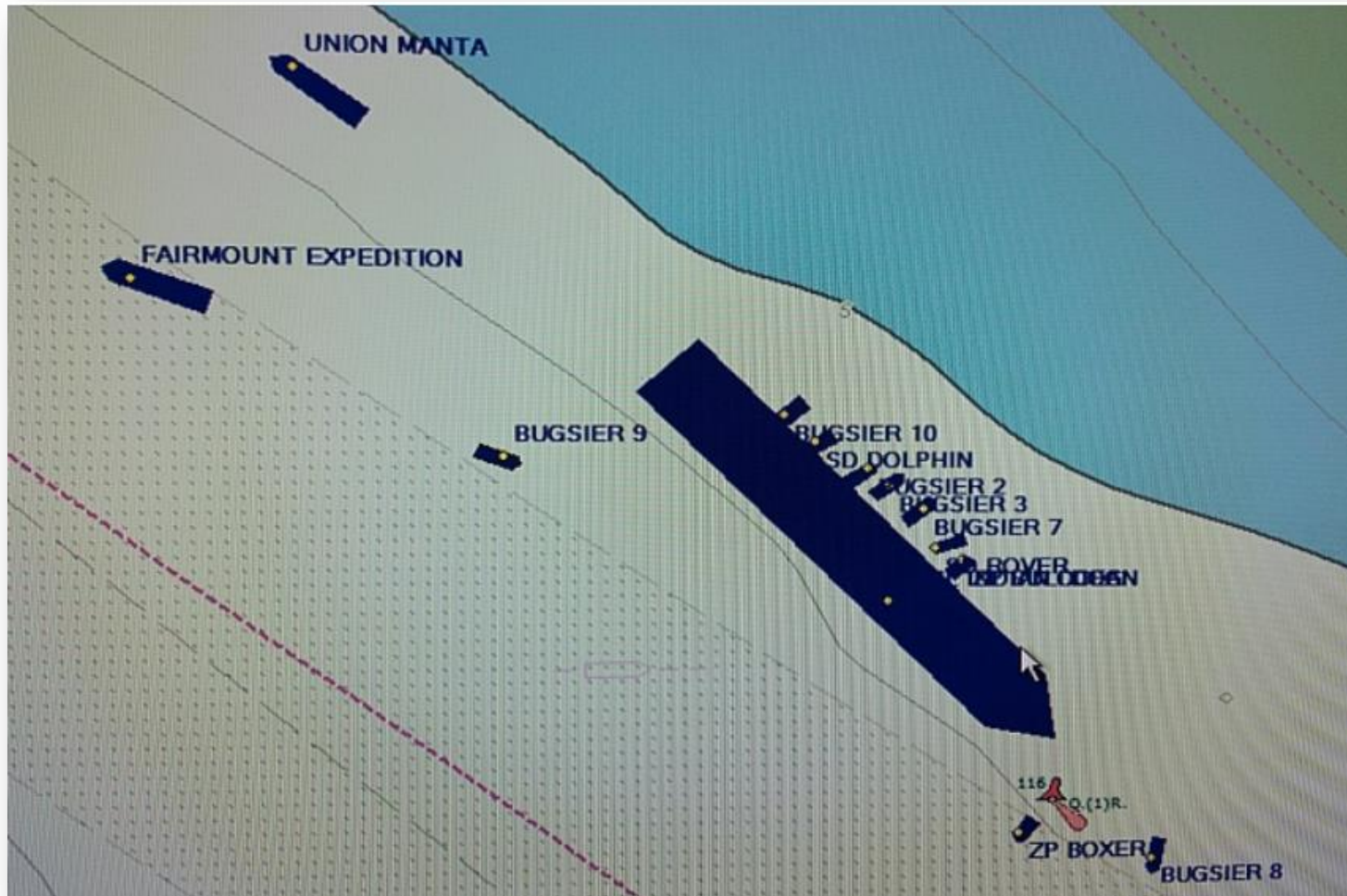


## 1.4 Continuing Preparation for 3rd towing attempt





## 1.5 3rd successful attempt to reload the ship



# 1.5 offshore-tugs FAIRMOUNT EXPEDITION and UNION MANTA –each about 200 tons bollard pull



## 1.5 ...





## 2. Costs

Typ of Costs		Amount in €
(1)	Tugboats, working vessels	440.000
(2)	Pollution control aircraft	65.000
(3)	HAST	28.000
(4)	additional staff costs	10.000
(5)	Other additional costs	90.000
total		633.000

### **3. Claim Management – particularly negotiate terms of the LoU**

- (1) Letter of Undertaking (LoU)
  - a. Issuing party?
  - b. Liability/possibility of amendment
  - c. Validity/ expiry in case of limitation fund
- (2) Next steps

**Thank you for your attention!**