

INTEGRATED MARITIME SERVICES

EMSA's Integrated Maritime Services (IMS) are used by EU Member States and EU bodies to obtain a clear picture of a broad range of activities in the maritime domain. IMS offer support across a wide variety of functions, including maritime safety and security, environmental monitoring, border control, defence, fisheries monitoring and law enforcement.

IMS: NUMBER OF USERS PER AUTHORITY TYPE



THEMATIC IMS SERVICES

647 TOTAL NUMBER OF USERS DISTRIBUTED AMONG

FISHERIES MONITORING (374)

- EFCA 59
- DG MARE 44
- MEMBER STATES 271

BORDER CONTROL (68)

- FRONTEX 68

LAW ENFORCEMENT (21)

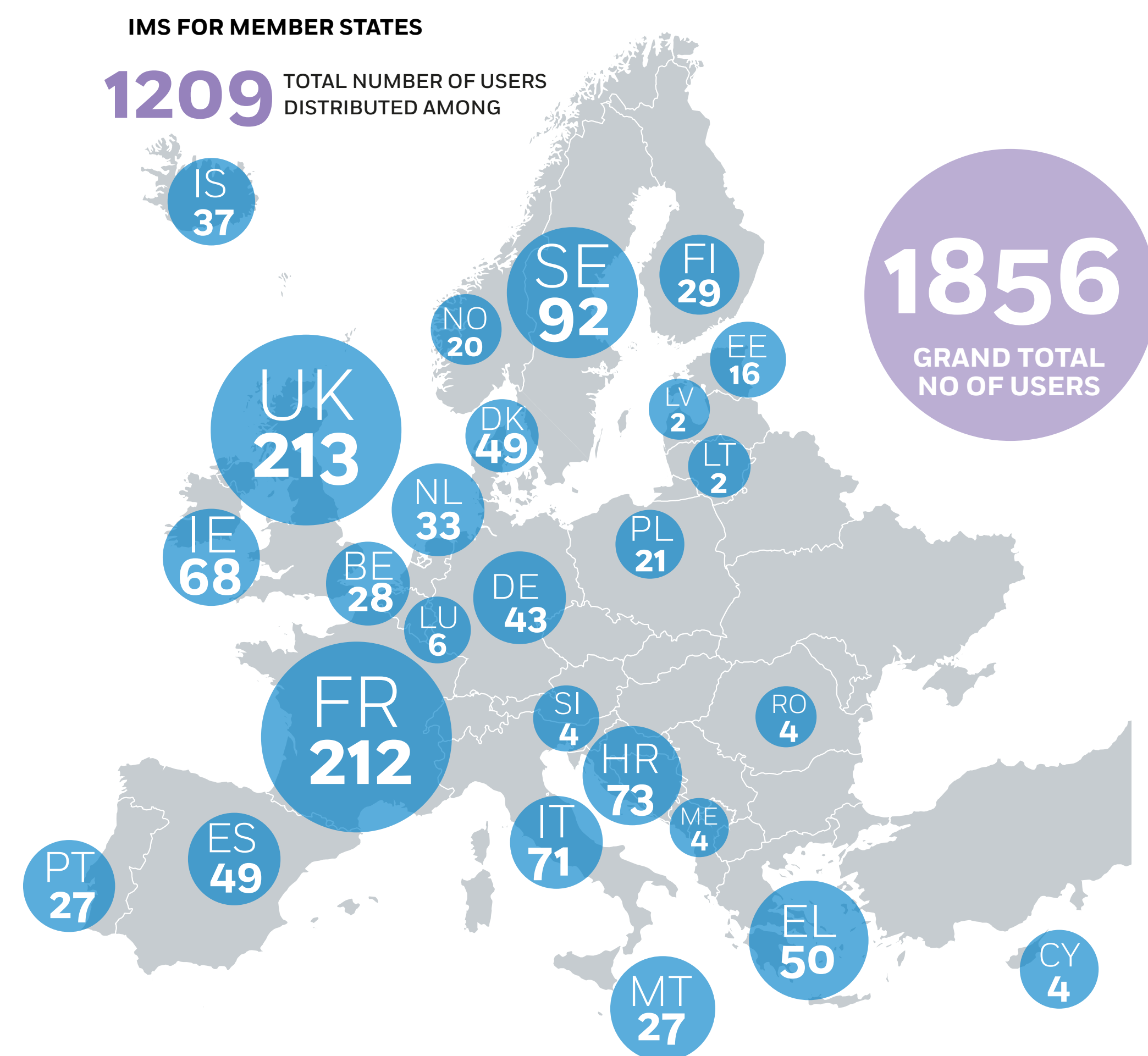
- MAOC-N 21

ANTI-PIRACY (14)

- EU NAVFOR 14

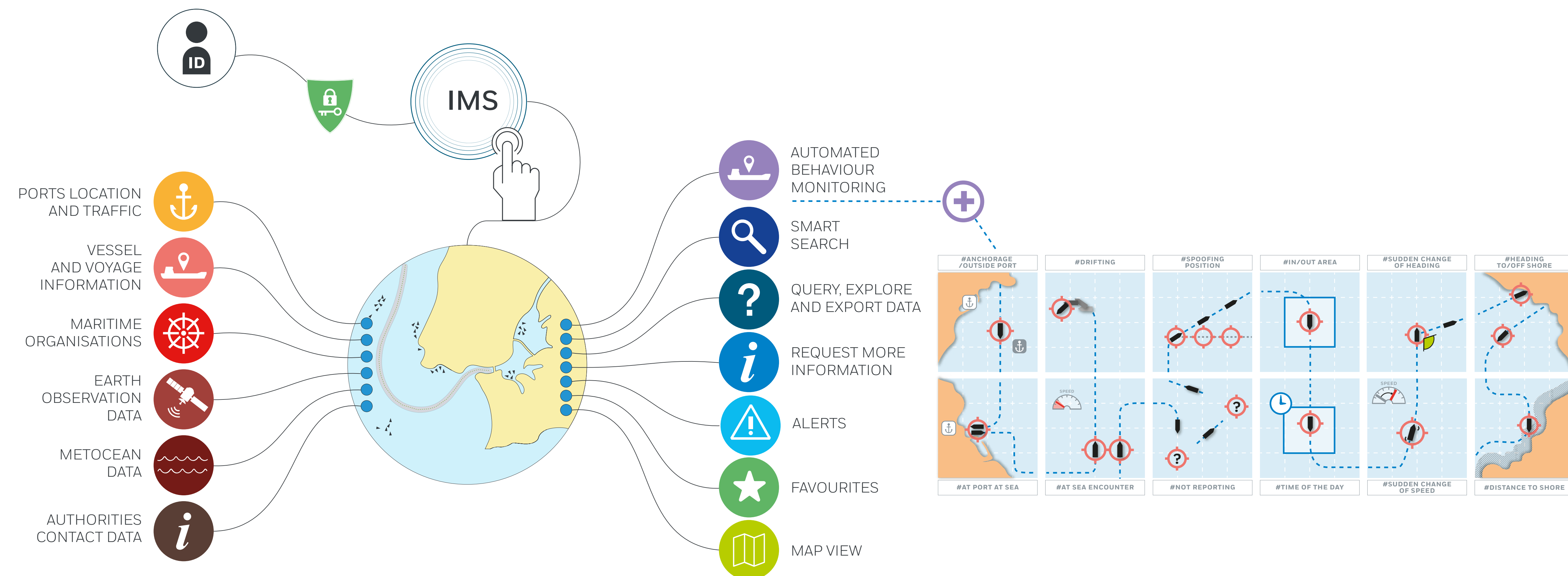
OTHER (170)

- DG MOVE 3
- OLAF 27
- EMSA 140



INTEGRATING AND COMBINING DATA

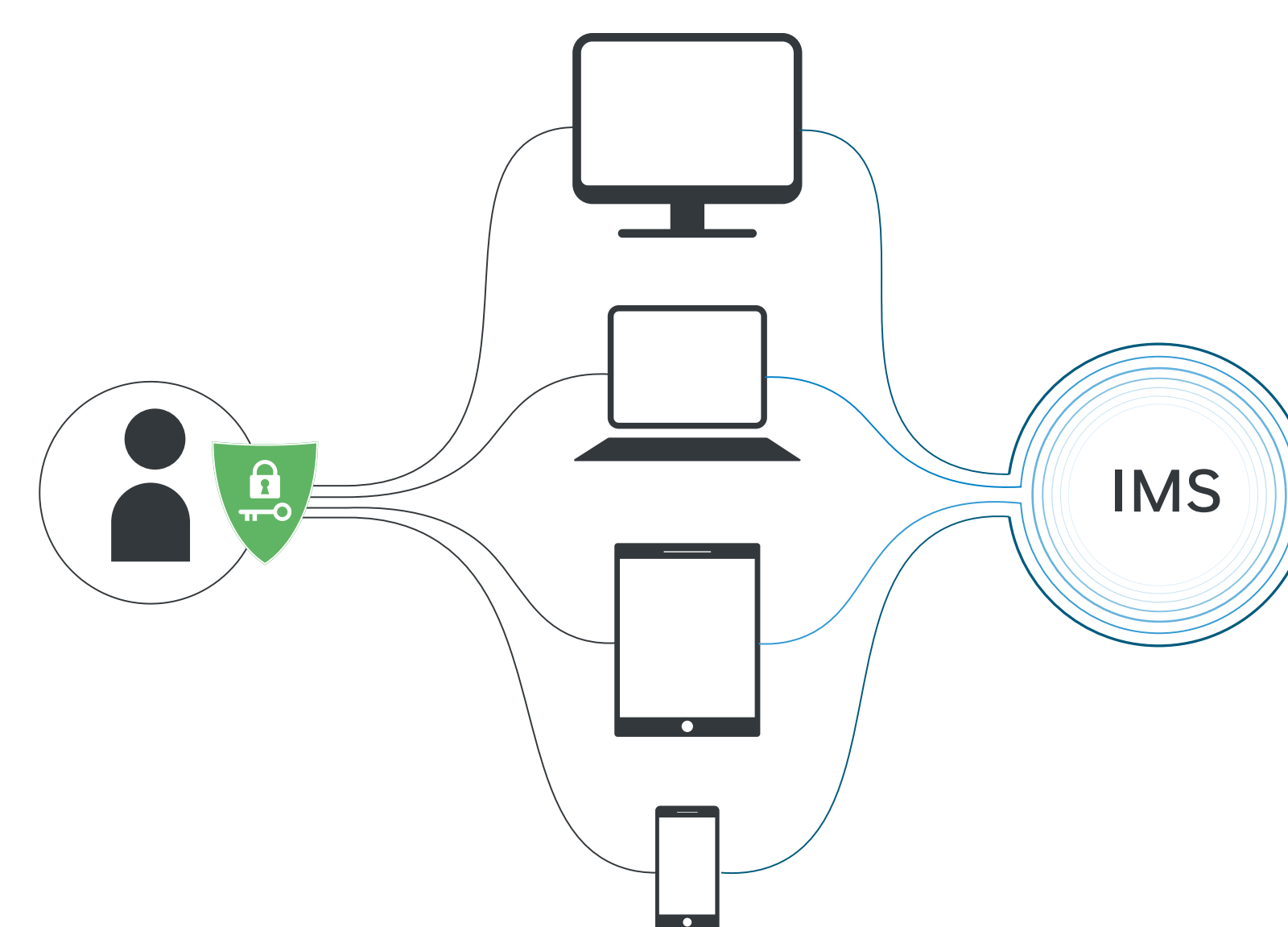
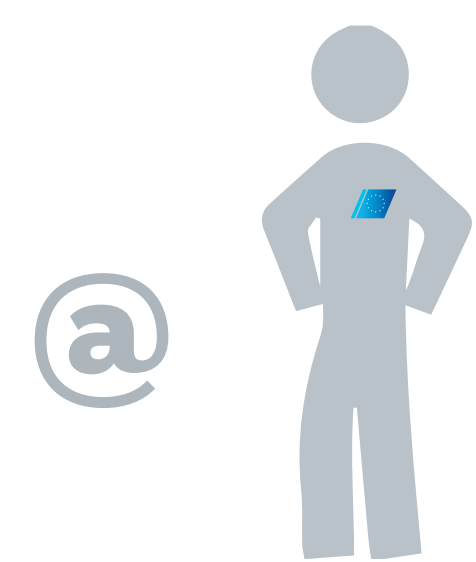
EMSA has developed a platform to integrate and combine different types of data, including data provided by the end user, to produce customised services tailored to user requirements. The service combines maritime data from different reporting/tracking vessel systems, Earth Observation satellite remote sensing products, Automated Behaviour Monitoring (ABM) alerting tools, Enhanced Search & Rescue functionality and a wide range of met-ocean related information, to provide a comprehensive maritime picture, while addressing common monitoring needs.



The services are offered directly to EU Member States and organisations, sparing them the cost and complexity of buying and managing the underlying hardware and software, and hosting separate data integration systems.

FLEXIBLE ACCESS TO MULTIPLE FUNCTIONS

Services are offered through an online graphical user interface available on desktop, laptop and mobile devices. Users have full operational support, 24 hours a day, 7 days a week, through EMSA's Maritime Support Services (MSS).



<p>VESSEL TRAFFIC MONITORING</p>	<p>MARITIME SAFETY AND SECURITY</p>	<p>FISHERIES MONITORING AND CONTROL</p>	<p>MARITIME BORDER CONTROL</p>
<p>MARITIME CUSTOMS CONTROL</p>	<p>MARITIME LAW ENFORCEMENT</p>	<p>MARINE POLLUTION MONITORING</p>	<p>OTHER FUNCTIONS IN THE MARITIME DOMAIN</p>