



OVERVIEW

The Copernicus Maritime Surveillance (CMS) service provides Maritime Safety and Security authorities with additional means to monitor locations of interest, follow the development of accidents and incidents, track objects at sea, and locate and identify vessels.

Maritime safety and security operations include prevention of accidents and collisions, search and rescue, vessel traffic routing, and port security. The CMS service supports authorities in their efforts to ensure the safe transit of vessels, people and goods in European waters, and European flagged vessels worldwide, and to provide assistance in the most timely and effective way possible when accidents or incidents occur.

Floating objects at sea can pose a serious threat to vessels, endangering lives and the environment. Satellites can help prevent collisions by tracking objects, such as icebergs and containers lost at sea, allowing vessel traffic authorities to issue warnings to ship operators, agents, and masters.

When a safety or security threat arises, authorities need as much information as possible to swiftly mobilise the best means available to monitor the situation. In remote areas or in poor weather conditions, where it may be dangerous to deploy people and difficult to send traditional assets, satellite images are often the best and only option for monitoring.

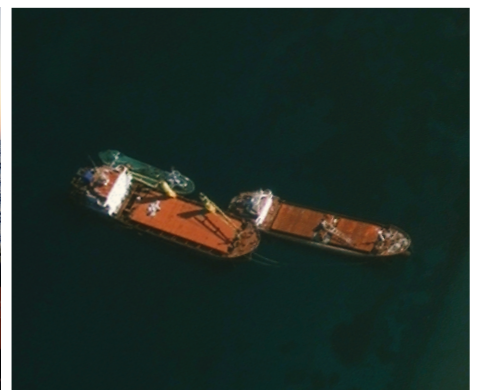
CMS is also used for vessel locating and identifying. If a vessel known to be transmitting in an area loses contact and is thought to be adrift, SAR radar satellite images can help search for the vessel over large areas based on the last known coordinates.



Port security is part of a safe transit strategy



Floating objects pose a risk to navigation



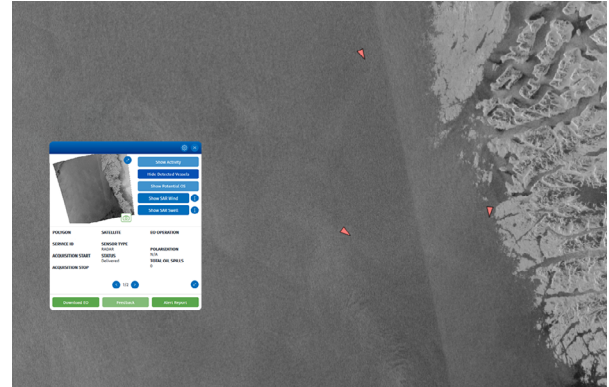
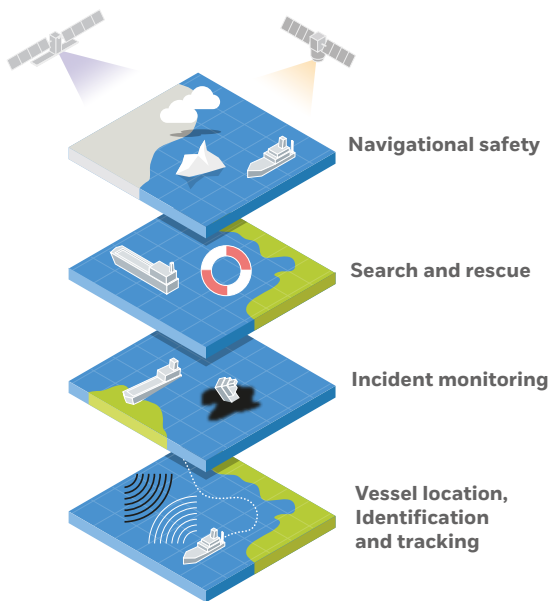
Emergency response benefits from EO data



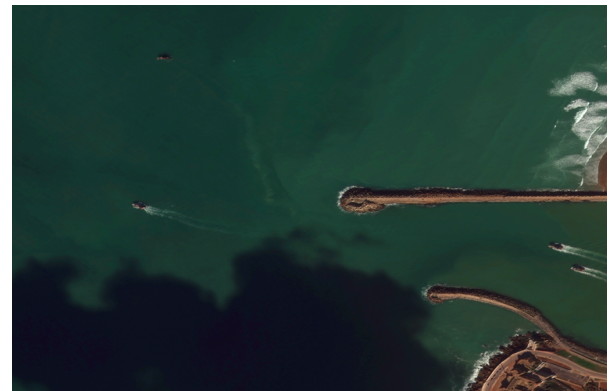
OVERVIEW

CMS SUPPORTS MARITIME SAFETY AND SECURITY THROUGH:

- tracking objects at sea
- monitoring incidents and accidents
- vessel locating and identifying



Locating and identifying non-reporting vessels is a key component of maritime security operations



High resolution optical images can be used to try and identify distinguishing features of unknown vessels

emsa.europa.eu/copernicus

Get in touch for more information

Copernicus Maritime Surveillance

[Twitter CopernicusCMS](#) / copernicus@emsa.europa.eu

Copernicus

[Twitter CopernicusEU](#) / [Facebook Copernicus EU](#)

European Maritime Safety Agency

Praça Europa 4
1249-206 Lisboa Portugal

Tel +351 21 1209 200 / Fax +351 21 1209 210

emsa.europa.eu / [Twitter EMSA_LISBON](#)

CREDITS

© European Maritime Safety Agency 2020

Image credits in order of appearance: © 2020 European Space Imaging/DigitalGlobe, a Maxar Company; Marinha Portuguesa; © EMSA, 2019, contains modified RADARSAT-2 data. All rights reserved. Certain parts are licenced under conditions to EMSA