



USE CASE



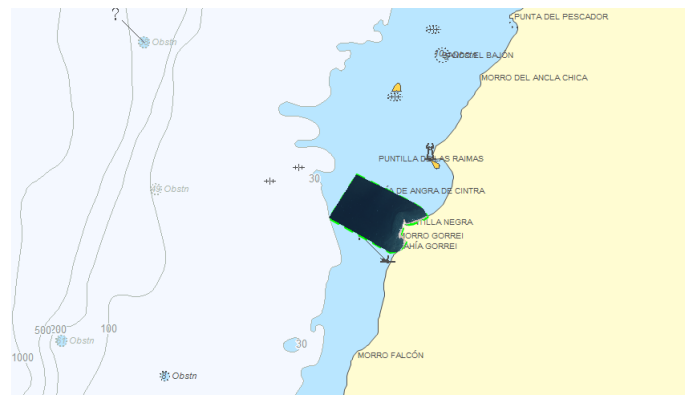
SPANISH CUSTOMS – DRUG SMUGGLING

The Spanish Customs regularly place service requests to Copernicus Maritime Surveillance (CMS) service with the aim of performing maritime surveillance of transported goods, provide law enforcement in cases of detected illegal activity and gather intelligence data.

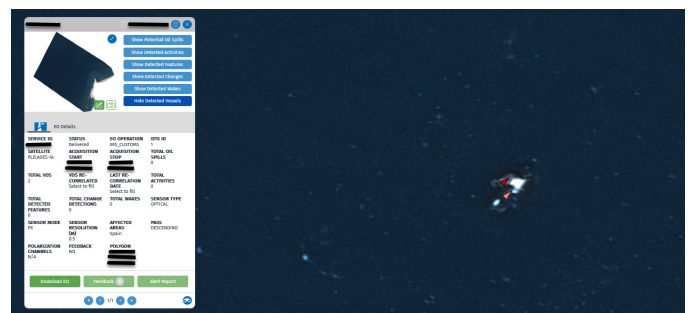
In December 2020, the Spanish authorities launched the operation 'Gigante' focusing on a suspected tug navigating along the coast of Western Sahara. The Spanish Customs sent a short notice requesting CMS to provide support for the operation, using optical services.

The optical satellite imagery and vessel detection service allowed the visual identification of the encounter of a tug with a fishing boat, which enabled the duty officers to subsequently intercept the suspected vessels. The operation was successfully concluded through the seizure of 18.4 tons of hashish, and the arrest of 4 people.

The CMS service reinforces the Spanish Customs capacity to detect and intervene in suspected criminal activities, and to create an intelligence product.



The 'Gigante' operation focused on a tug on the Western Saharan coast



An optical image displaying vessels' rendez-vous at sea



USE CASE

Copernicus is the Earth Observation component of the European Union's Space Programme which looks at our planet and its environment for the benefit of all European citizens. It offers information services that draw from satellite Earth Observation and in-situ (non-space)

data. The European Maritime Safety Agency (EMSA) is the Entrusted Entity responsible for implementing the Copernicus Maritime Surveillance service on behalf of the European Commission (DG-DEFIS).



Drugs on board the intercepted vessel



Operation 'Gigante' ongoing

emsa.europa.eu/copernicus

Get in touch for more information

Copernicus Maritime Surveillance Service

Twitter CopernicusCMS / Instagram CopernicusCMS
copernicus@emsa.europa.eu

Copernicus

Twitter CopernicusEU / Facebook CopernicusEU

European Maritime Safety Agency

LinkedIn EMSA / Twitter/X EMSA_EU
Facebook EMSA / Instagram EMSA
emsa.europa.eu

REFERENCES

<https://www.lavanguardia.com/vida/20201229/6156129/interceptado-norte-gran-canaria-remolcador-15-000-kilos-hachis.html>

<https://rtvc.es/interceptan-un-remolcador-con-15-000-kilos-de-hachis/>

https://www.lavozdeg Galicia.es/noticia/galicia/2020/12/31/aduanas-retrato-aire-trasvase-18000-kilos-hachis-cyklop/0003_202012G31P12992.htm

CREDITS

Header image: © EMSA (2018) © (2018) European Space Imaging / Maxar Technologies | © European Maritime Safety Agency, contains modified PLEIADES 1A data, (2021) | © CNES (2021), Distribution Airbus DS | © DAVA Spanish Customs | © DAVA Spanish Customs

This document was produced with funding by the European Union. Views and Opinions expressed are however those of the author only and the European Commission cannot be held responsible for any use which may be made of the information contained therein.