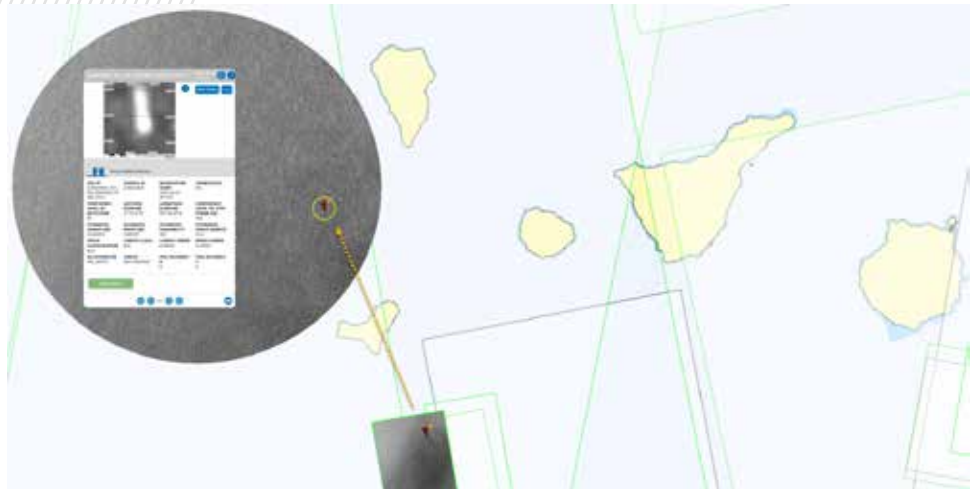


SPAIN'S SASEMAR – SEARCH AND RESCUE OPERATION

The Copernicus Maritime Surveillance (CMS) service supports maritime safety by helping prevent accidents and collisions. It assists Member State authorities in ensuring the safe transit of vessels, people and goods in European waters, and European flagged vessels worldwide.

Spain's Maritime Safety and Rescue Agency (SASEMAR) leverages CMS services to underpin maritime safety, prioritising the most hazardous zones within its search and rescue area, which are distinguished by intense sea traffic and significant movement of people and cargo. By routinely requesting CMS support, SASEMAR strengthens its capacity to prevent incidents and respond swiftly to search and rescue needs.



In August 2024, with the help of CMS SAR' satellite image and value-added products, a vessel not reporting its position was detected southeast of La Restinga, in Southern El Hierro Island (Canary Islands). Based on this information, the Maritime Rescue Coordination Centre 'MRCC Las Palmas-CCS Tenerife' deployed a rescue helicopter to the area, which confirmed a vessel in distress, not under command. A SASEMAR maritime unit was then dispatched and successfully rescued 51 people.

emsa.europa.eu/copernicus

Get in touch for more information

Copernicus Maritime Surveillance Service

Twitter/X CopernicusCMS / Instagram CopernicusCMS
copernicus@emsa.europa.eu

Copernicus

Twitter/X CopernicusEU / Facebook CopernicusEU

European Maritime Safety Agency

LinkedIn EMSA / Twitter/X EMSA_EU
Facebook EMSA / Instagram EMSA
emsa.europa.eu

REFERENCES

- 1 Synthetic Aperture Radar.

CREDITS

© European Maritime Safety Agency, contains modified TerraSar-X data, (2024).
© DLR e.V. (2024), Distribution Airbus Defence and Space GmbH.

Funded by European Union

EU SPACE

Copernicus is the Earth Observation component of the European Union's Space Programme which looks at our planet and its environment for the benefit of all European citizens. It offers information services that draw from satellite Earth Observation and in-situ (non-space) data. The European Maritime Safety Agency (EMSA) is the Entrusted Entity responsible for implementing the Copernicus Maritime Surveillance service on behalf of the European Commission (DG-DEFIS).

COPERNICUS MARITIME SURVEILLANCE (CMS)

The Copernicus Maritime Surveillance Service provides Earth Observation products (satellite images and value-added products) to support a better understanding and improved monitoring of activities at sea, within a wide range of operational functions such as maritime safety, maritime security, customs, law enforcement, marine pollution monitoring, fisheries control and international cooperation. Implemented by EMSA on behalf of the European Commission (DG-DEFIS), it is a Security Service of Copernicus. It operates under restricted access which is granted to authorised users free of charge.

This document was produced with funding by the European Union. Views and Opinions expressed are however those of the author only and the European Commission cannot be held responsible for any use which may be made of the information contained therein.