



# IMS Group

## SEG Transition to Operation (T2O)

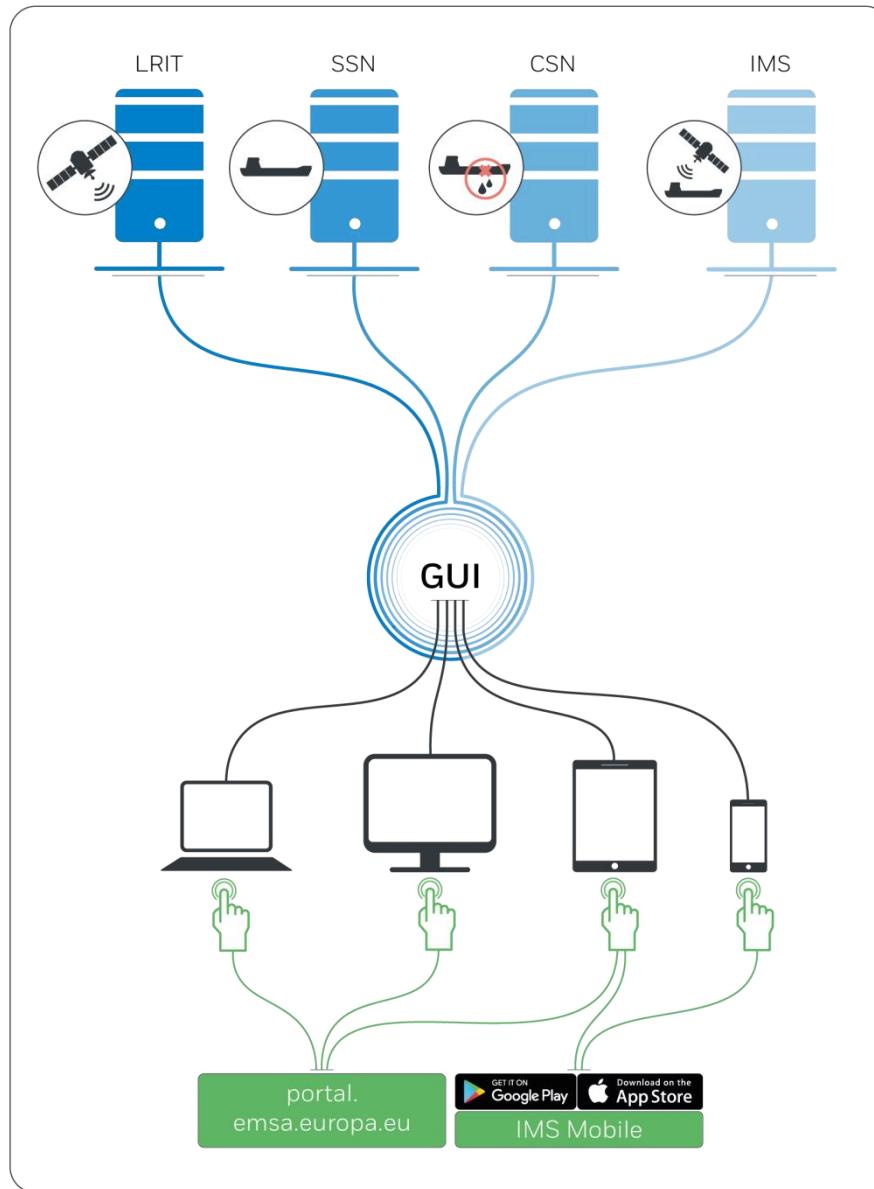
Agenda item 3 UCM#9

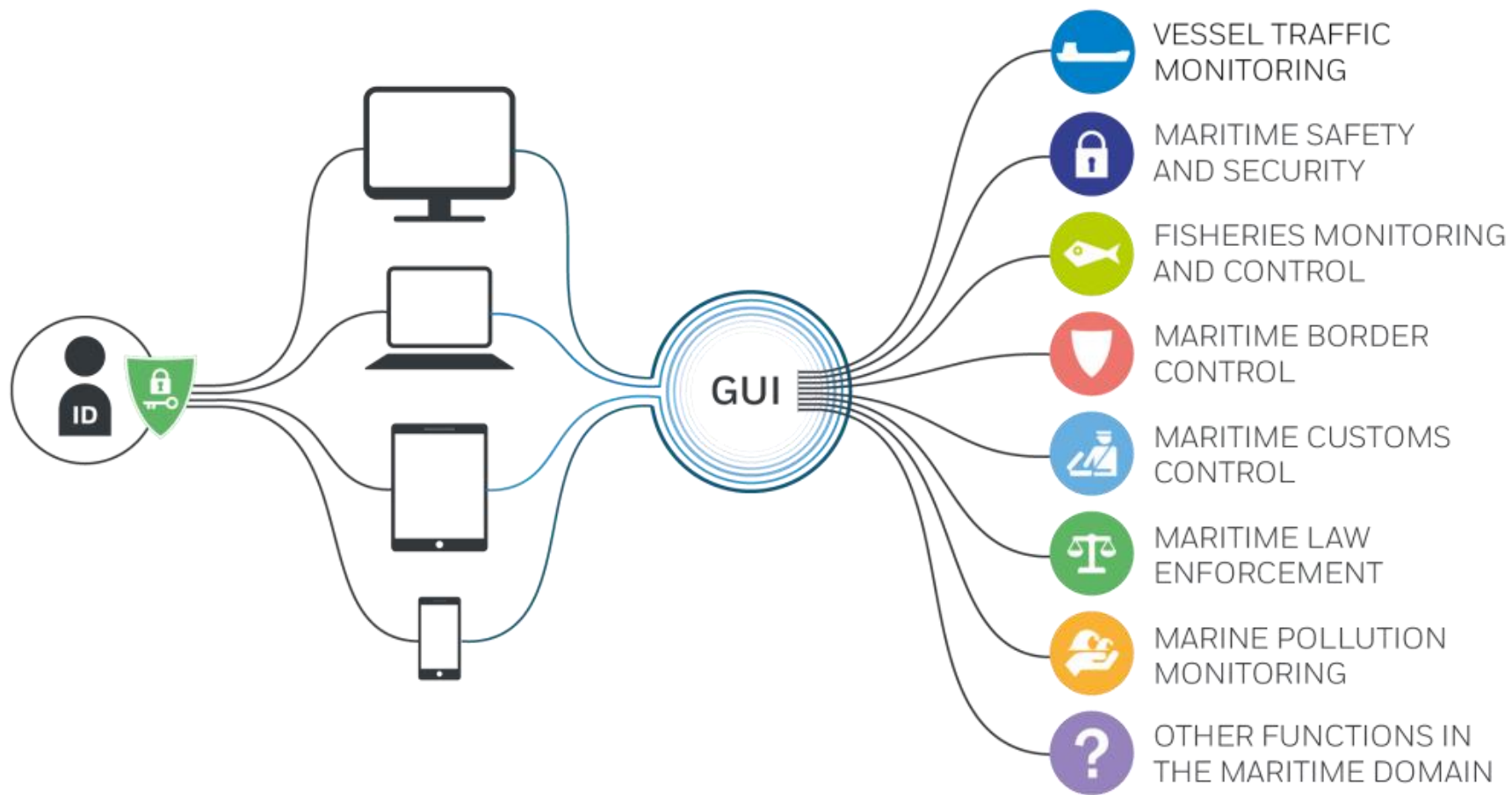
Lisbon / 18 May 2017

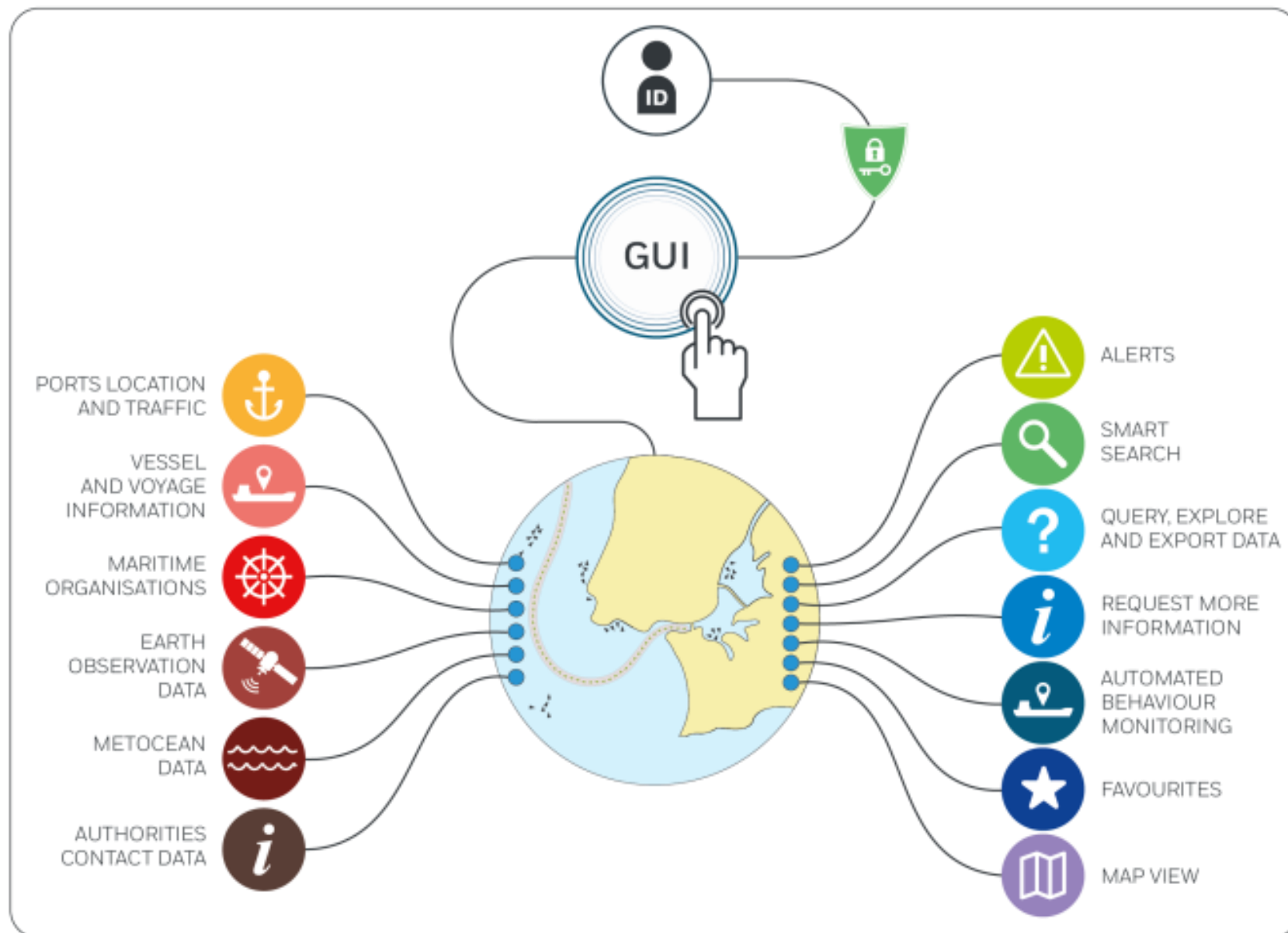
## What is the SEG?

- New single Graphical User Interface that will replace
  - Integrated Maritime Services Web User Portal (WUP)
  - SafeSeaNet Graphical Interface (GI)
  - LRIT User Web Interface (UWI)
  - CleanSeaNet GIS Viewer
- Provisionally named SEG (SafeSeaNet Ecosystem GUI), this common user interface will serve diverse maritime functions and cover the needs of different user domains.
- **SEG is the unique and common front-end to a number of different back-ends (SSN EIS, LRIT, CSN and IMDatE).**

# New Common Graphical User Interface

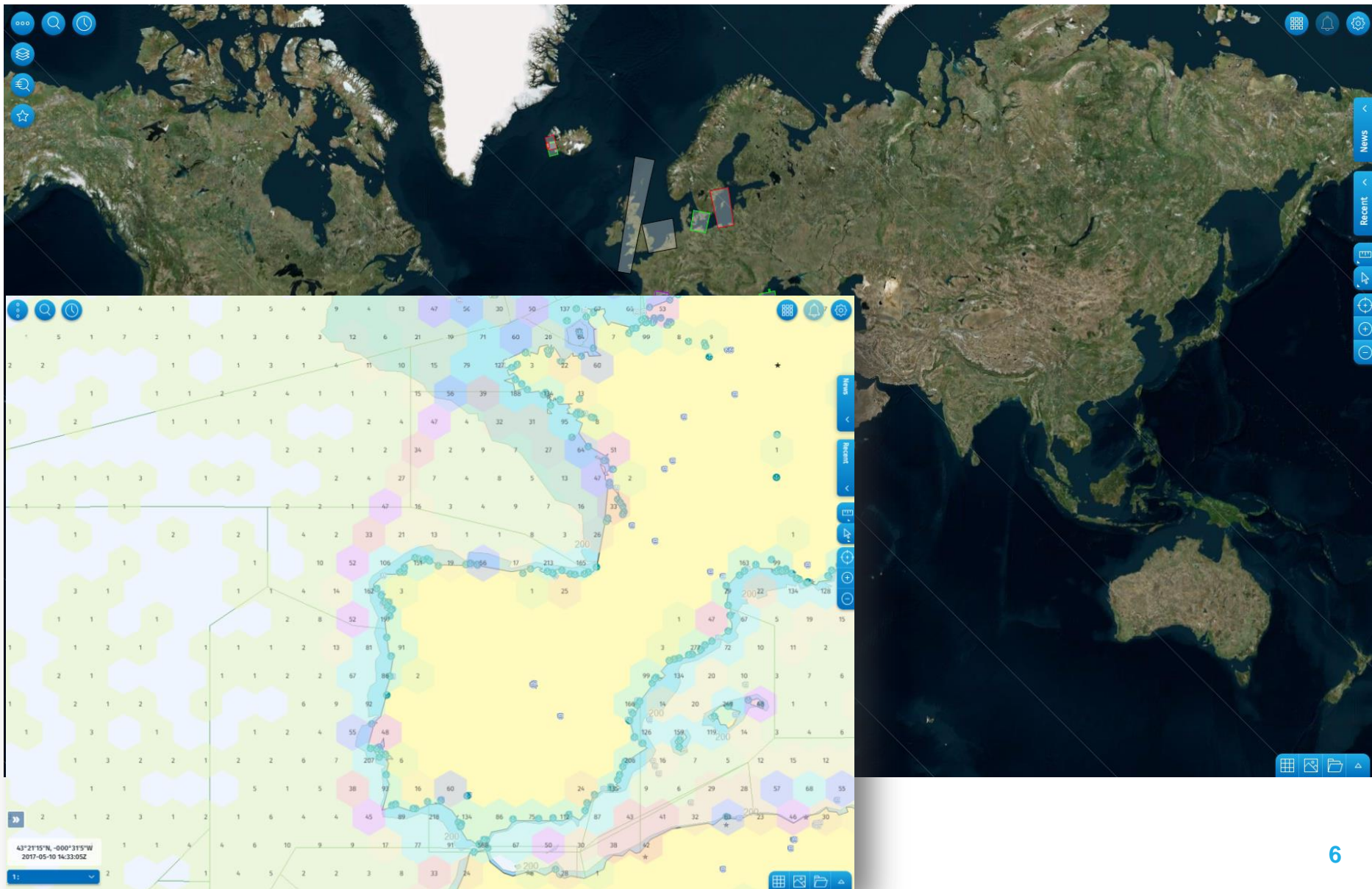








# SEG - Map Centred



## Objectives

- Implement and manage the transition to operations of the SafeSeaNet Ecosystem Graphical User Interface (SEG)

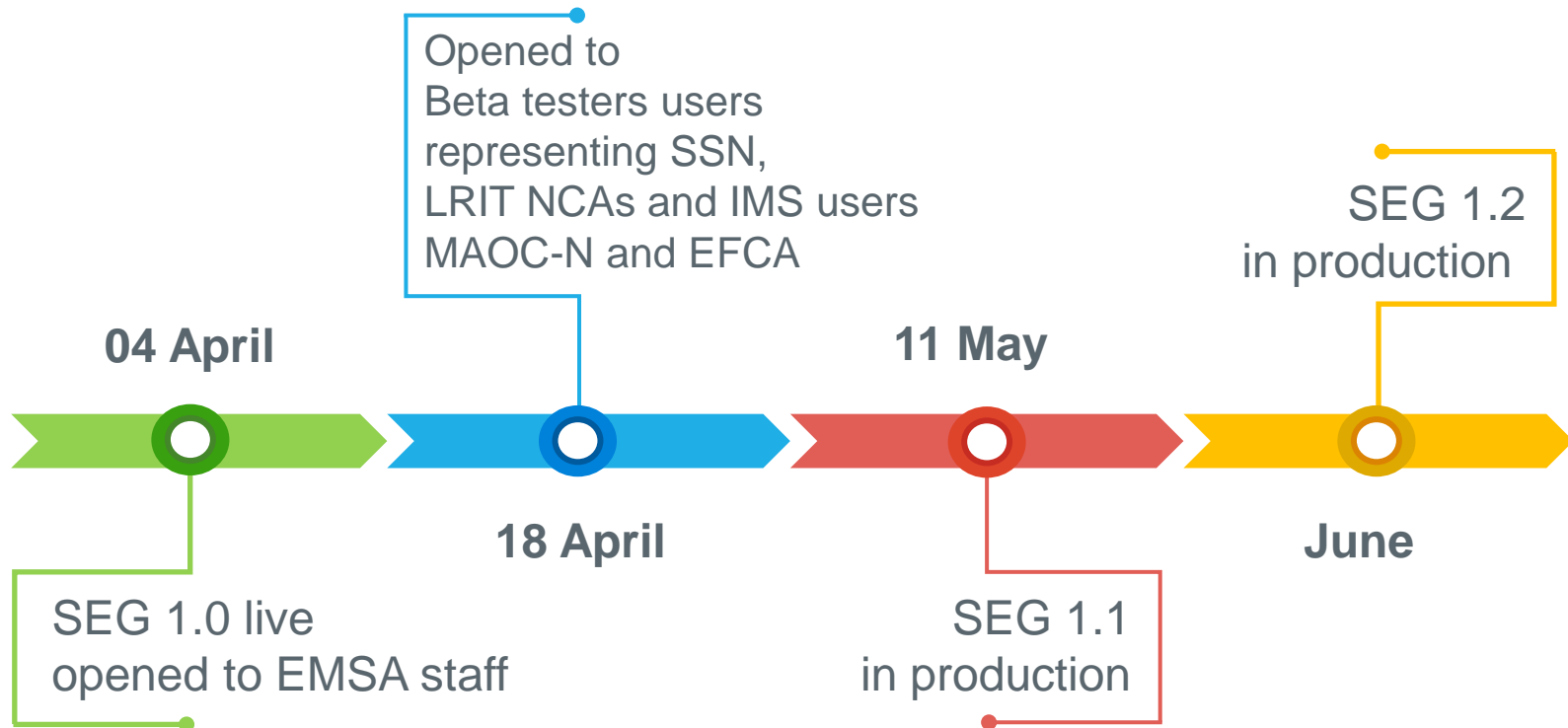
## Timing

- Now to Q1 2018

## Work packages

- Training
- Stakeholders management
- User migration and configuration
- Monitoring of operations
- Switch-off of legacy systems

# SEG Transition to operation (T2O)





## SEG Initial Operations Phase

- All existing GUI will still be accessible to all users.
- The decision on their de-commissioning will be taken in consultation with the relevant stakeholder Groups (SSN/LRIT/IMS and CSN).

## IMS currently part of Initial Operation Phase

- HR, IT, SE, FR, LT, IE, SI, UK

## SEG is available and mature for operational use

### Proposed plan for IMS users to join SEG:

- EMSA proposes to gradually open SEG to all IMS users:  
**MS By MS from end May to end June**  
(a roadmap will be sent following this meeting)

## Proposal to create all new IMS users automatically in SEG.

## Access to the SEG

- Access to the SEG is provided via the EMSA Maritime Application Portal
- <https://portal.emsa.europa.eu>
- Username/password has NOT changed





[emsa.europa.eu](https://emsa.europa.eu)

 [twitter.com/emsa\\_lisbon](https://twitter.com/emsa_lisbon)

 [facebook.com/emsa.lisbon](https://facebook.com/emsa.lisbon)

