









IMS MS Service update

IMS Group UCM#13

Samy Djavidnia

Lisbon, 22.05.2019



- Promote and increase regional, national and local  **cooperation**;
- Provide additional, complementary and supportive  **data, information and tools** for enhancing maritime domain picture;
- Provide relevant services to all authorities/organisations executing functions in the  **maritime domain**;
- Respond to detailed needs and  **requirements** as specified by  **users**;
- Provide services to users which are  **Easy** to use,  **Fast** to develop and  **Cost-effective** to run.
- **Governance/ Strategy** via **HIGH LEVEL STEERING GROUP** for Governance of the Digital Maritime System and Services.

Overall IMS users (as of March 2019)

THEMATIC IMS SERVICES

879 TOTAL NUMBER OF USERS
DISTRIBUTED AMONG

FISHERIES MONITORING (759)

- EFCA	89
- DG MARE	49
- MEMBER STATES	621

BORDER CONTROL (85)

- FRONTEX	82
- MS	3

LAW ENFORCEMENT (20)

- MAOC-N	20
----------	----

ANTI-PIRACY (15)

- EU NAVFOR	15
-------------	----

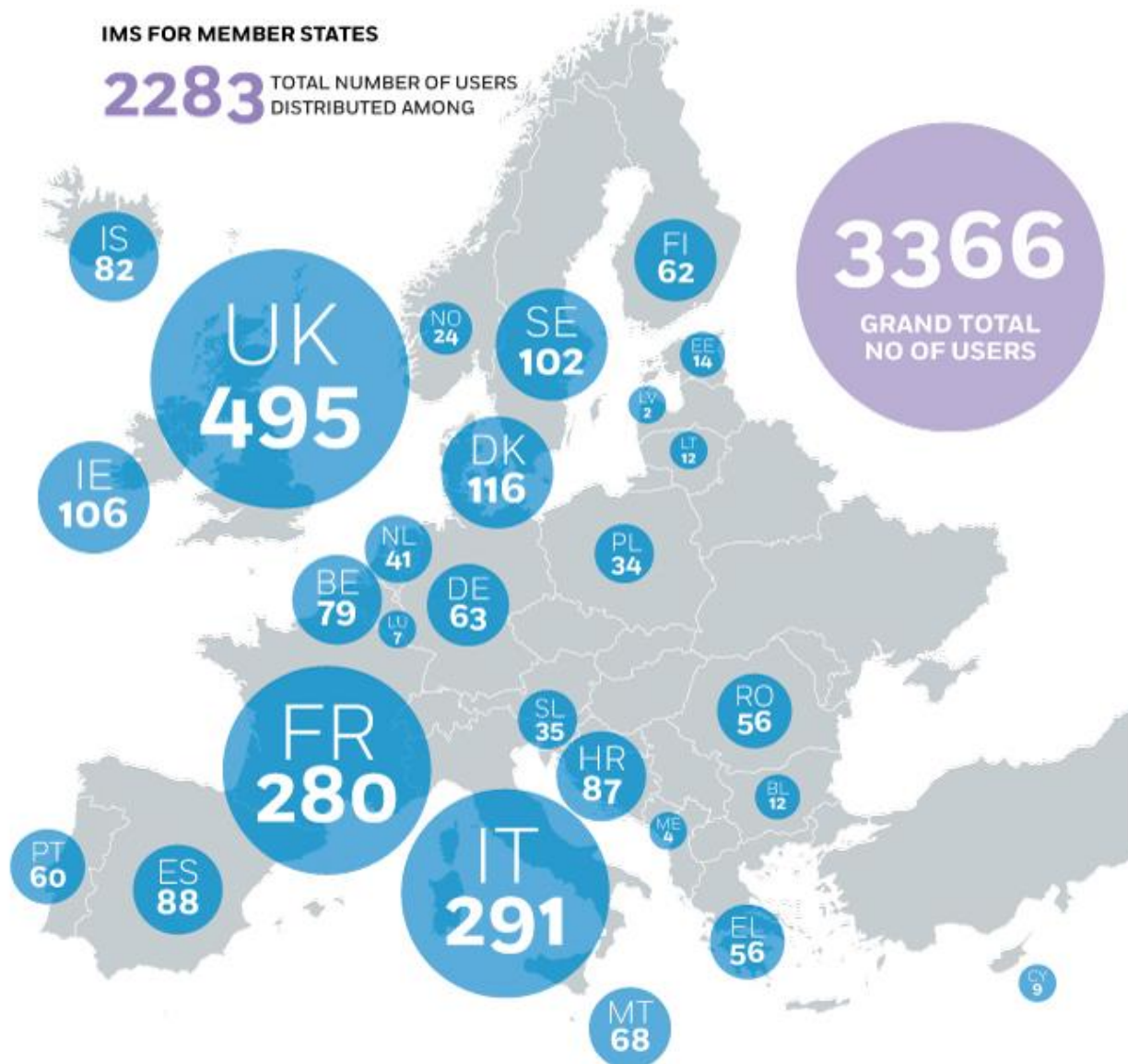
OTHERS

204

- EMSA	165
- OLAF	27
- EEAS	6
- DG/MOVE	5
- DG HOME	1

IMS FOR MEMBER STATES

2283 TOTAL NUMBER OF USERS
DISTRIBUTED AMONG



Active S2S interfaces

MS	Data type and coverage	Interface used
Italy (Italian Navy)	Satellite AIS – AOI	SSN Streaming Interface ver. 1.1 (SSN Proxy solution)
Italy (Italian CG)	Satellite AIS – Global	SSN Streaming Interface ver. 1.1 (SSN Proxy solution)
Poland	Satellite AIS – Global	SSN Streaming Interface ver. 1.1 (SSN Proxy solution)
Portugal (Navy)	Satellite AIS – Global	WMS OGC layer
Iceland	Satellite AIS – AOI	SSN Streaming Interface ver. 1.1 (SSN Proxy solution)
Denmark	Satellite AIS – AOI	SSN Streaming Interface ver. 1.1 (SSN Proxy solution)
Norway	Satellite AIS – AOI	SSN Streaming Interface ver. 1.1 (SSN Proxy solution)
Poland	ABM alerts	JSON service
Poland	Un-correlated VDS	On-request service- HTTP GET method; WFS response

Data type or specific function	Business rule	Presentation / display aspects
Sulphur emissions information	Specific display of ships exceeding a defined SO ₂ (sulphur) emission threshold.	Technical discussions on the implementation are on-going with Germany in the context of the RPAS services.
S2S for FR SeaMIS	Implement a S2S service to enrich French SAR information system with additional position reports, voyage PortPlus information, Incidents, Hazmat and MRS.	Technical discussions were done with France. This is now discussed with other Member States through the Pilot project on “Facilitation of ship to shore reporting” organised under the EMSA “Interoperability Project”. The first meeting was organised on 3 April 2019.
Chat (Collaborative) Tool	IMS registered users requested a live chat tool to exchange information between operators. The tool will increase collaboration between cross-border and cross-sectorial operational actors.	A number of options for the technical implementation are currently being evaluated via a study launched by EMSA. The outcome of the study will be presented to the group.
AIS - Aids to Navigation (AtoNs), SAR Aircraft, SART	Display of AIS AtoNs / Display of Standard Search And Rescue aircraft position reports and Display of AIS-SART.	Will be available once the data is available from the AIS regional servers and the relevant back-end services are implemented.
Drift Modelling	The IMS Search & Rescue community identified the need to develop a drift modelling tool within the IMS interface(s) to assist operators in SAR activities.	The tool will provide IMS registered users access to one or more [external] drift models. Users will be able to specify and input parameters to drive the models via the SEG. The results of the drift models will be displayed in the SEG.
Approximate Distance Calculator	IMS users will be able to calculate the approximate distance travelled by a vessel within (and outside) a determined SECA area	The track and the distance(s) will be displayed in the map and TTT of the SEG.

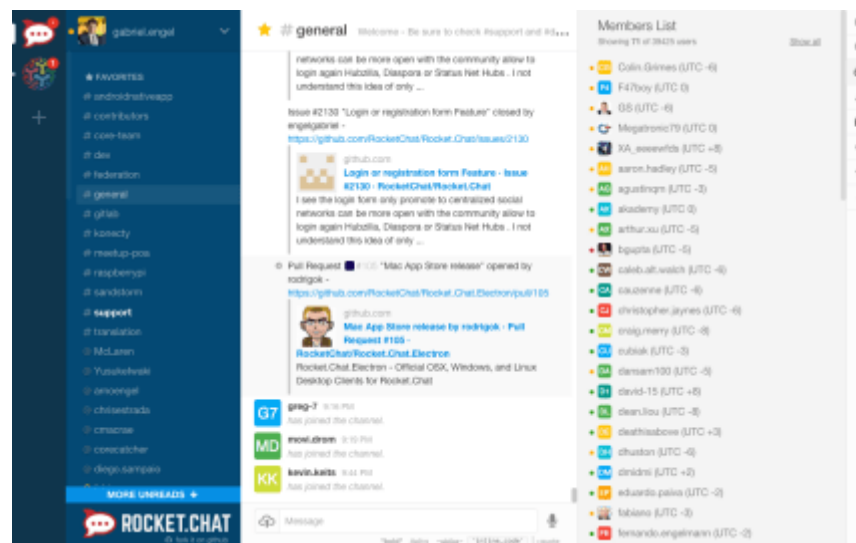
Collaborative Chat Tool

- Study to analyse needs and available solutions.
- Involved volunteer participants from Latvia, Poland, Denmark, Romania, Spain & France.
- 19 requirements plus 6 criteria were analysed to evaluate possible solutions.
- 3 solutions have been identified. EMSA will now choose a solution and run a pilot (together with MS). Volunteers?

EMSA – EUROPEAN MARITIME SAFETY AGENCY

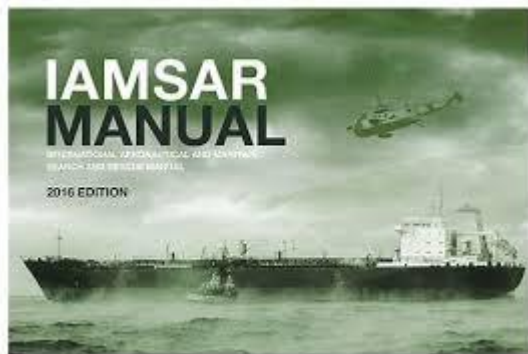


Study on chat / collaborative tool for Integrated Maritime Services (IMS)



Drift Modelling Tool

- At UCM#12 Member States agreed on development of a Drift Modelling Tool as part of the IMS service.
- Draft Terms of Reference distributed as UCM#13 papers.
- Set up [Correspondence] Expert Group to drive the development.
- By end of UCM#13 + 1 week (Friday 31st May), all Member States interested in being part of the Expert Group should communicate it to ims@emsa.europa.eu



IMS Correspondence Expert Group on “Drift Modelling”

Terms of Reference (draft)

1. Mandate

As agreed at the IMS Group 12th User Consultation Meeting (UCM#12), the IMS Correspondence Expert Group on “Drift Modelling” should propose *Guidelines* for developing an operational IMS Drift Modelling tool to be used for Search and Rescue and other Maritime Safety purposes. These Guidelines shall take into consideration the following high-level principles:

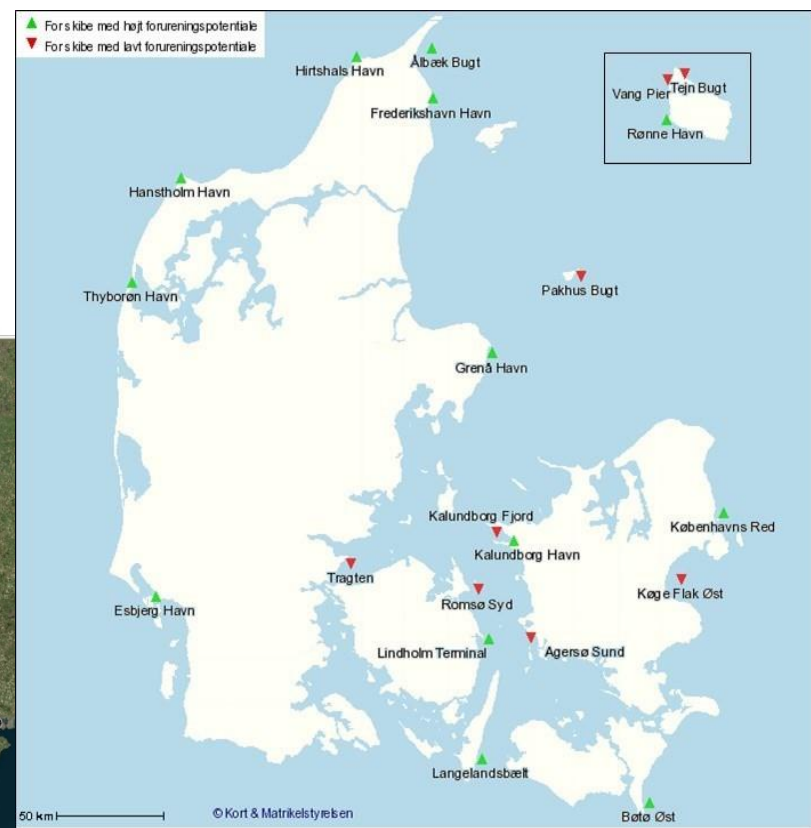
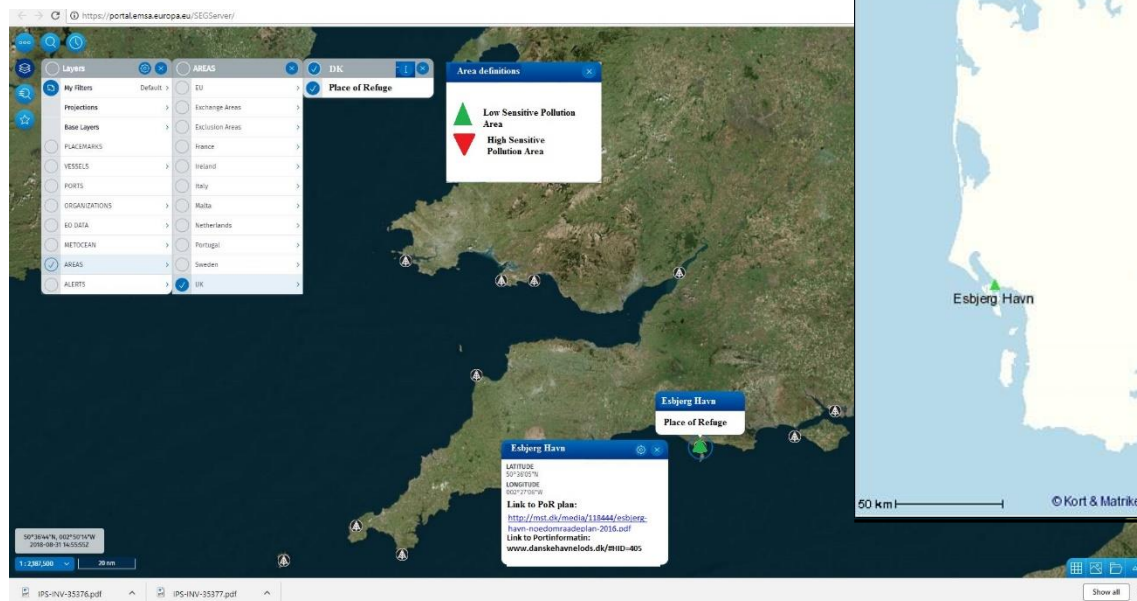
- The Tool shall follow the IAMSAR Standards and Recommendations;
- The Tool shall support cross-sectoral and cross-border cooperation, and where necessary, collaboration;
- EMSA will not develop a new proprietary Drift Model, but will include the possibility to connect to several existing state-of-the-art drift models through standard interfaces, hence allowing to benefit from the drift model most adapted to the local circumstances of the event;
- The Tool shall be simple and intuitive for operators of all levels and experiences.

The objective of the *Guidelines* is to gather expert knowledge on the user needs and thus have a common understanding of the features and functionalities to be implemented in the IMS Drift Modelling Tool.

The *Guidelines* will thus provide requirements on the drift parameters for connecting to existing models and on how to display results in the IMS graphical map interfaces (SEG and IMS Mobile App).

Place of Refuge

- Request from Denmark in Q4 2018 to include information on Place of Refuge (PoR), emergency plans under the “Areas” layer section.
- This is non-confidential information which can be made available to all.
- Any other MS interested please contact us ims@emsa.europa.eu





 twitter.com/emsa_lisbon
 facebook.com/emsa.lisbon

 **EMSA**
European Maritime Safety Agency